

MODELO	13161G305
DESCRIPCION	CABLE UTP CAT6 ENSON 13161G305 GRIS PRO-II EXTERIOR 305MTS

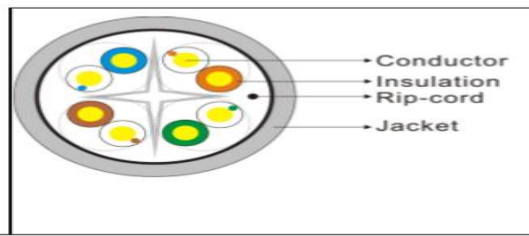
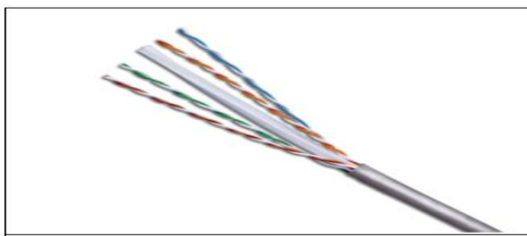
CATEGORY 6 TWISTED CABLE

General Features

- Available in 8 circuits (4 twisted pairs)
- Standard wires colours: Blue/Blue-white, Orange/Orange-white, Green/Green-white and Brown/Brown-white
- Available without shielding (UTP)
- Solid wire (AWG 23/1, Bare copper)
- HDPE insulator
- PVC jacket
- Frequency: Maximun 250MHz
- Operating temperature: -20°C to +75°C

Electrical Features

- DC-Loop resistance: $\leq 0.0658 \Omega/m$
- Propagation speed: 0.64
- Propagation delay: 4.80-5.30 ns/m
- Delay skew < 100MHz < 0.20 ns/m
- Capacitance: f.f.s
- Return Loss (Min. at 250MHz): 15.60 dB
- Attenuation: (Min. at 250MHz): 39.40 dB
- Meet EIA/TIA 568 B.2, EN 50173-1, ISO/IEC 11801



TRANSMISSION SPECIFICATIONS

Frequency (MHz)	Attenuation(Max) (dB/100m)	NEXT(Min) (dB/100m)	PSNEXT (Min) (dB/100m)	ELFEXT (Min) (dB/100m)	PS ELFEXT(db)	RL(Min) (dB)	Phase delay(Max) (ns/100m)	Delay(ns)
1	1.9	74	72	68	61	20	570	570
4	3.7	65	63	56	49	23	552	552
10	5.9	59	57	48	41	25	545	545
16	7.5	56	54	44	36.9	25	543	543
20	8.4	55	53	42	35	25	542	542
31.25	10.6	52	50	38	31.1	23.6	540	540
62.5	15.4	47	45	32	25.1	21.5	539	539
100	19.8	44	42	28	21	20.1	538	538
200	29	40	38	22	15	18	537	537
250	32.8	38	36	20	14.2	17.3	536	536